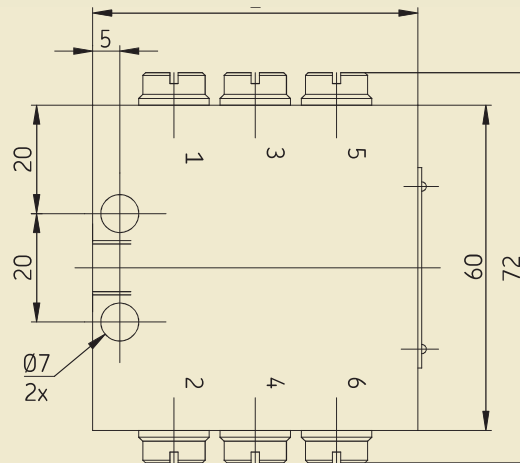


Block feeder VPB, basic design

for oil or grease, without attachments, without monitoring



Fig. 6 Block feeder VPB, basic design



Dimensions			
Type	Number of Feeder sections	Number of possible outlets	L [mm]
VPBM-3 ¹⁾ / VPBG-3 ¹⁾	3	6	60
VPBM-4 / VPBG-4	4	8	75
VPBM-5 / VPBG-5	5	10	90
VPBM-6 / VPBG-6	6	12	105
VPBM-7 / VPBG-7	7	14	120
VPBM-8 / VPBG-8	8	16	135
VPBM-9 / VPBG-9	9	18	150
VPBM-10 / VPBG-10	10	20	165

1) This progressive feeder must be installed with check valves

Technische Daten	
Style	hydraulically controlled
Mounting position	discretionary
Screw connection	I/O VPBM = M10x1 VPBG = G1/8"
Umgebungstemperaturbereich	-25 bis +110 °C
Quantity of outlets	3 to 20
Material	
Inlet plate/end plate	Steel, tinned/nitrile
Hydraulic	
Operating pressure max.:	Oil 200 bar, grease 300 bar
Volume per outlet and cycle	0,20 cm ³
Lubricant	Mineral oils, greases based on mineral oil, environmentally friendly and synthetic oils and greases
Operating viscosity	> 12 mm ² /s
Worked penetration	≥ 265 × 0.1 mm (up to NLGI grade 2)

Accessories		
Male couplings		
Designation		Order no.
Inlet	for tube ø 6,	406-423
M10x1:	for tube ø 8,	441-008-511
	for tube ø 10,	410-443
Inlet	for tube ø 6,	406-403W
G1/8":	for tube ø 8,	408-423W
	for tube ø 10,	410-443W
Outlets	for tube ø 4,	404-403
M10x1:	for tube ø 6,	406-403
	for tube ø 8,	441-008-511
Outlets	for tube ø 4,	404-403W
G1/8":	for tube ø 6,	406-403W
	for tube ø 8,	408-403W
Plug-in connector VPM for tube ø 6, M		451-006-518-VS
Plug-in connector VPM for tube ø 6, G		451-006-518W VS
Screw plug for unused outlets:		
VPKM (M10x1)		466-431-001
VPKG (G1/8")		466-419-001