

CHARACTERISTICS

NICKEL PLATED

LUBRICANT: OIL / GREASE

ATEX CE Ex II2 GD

MARKING

BASE THREADS

INLETS: BSP AND NPT

2 VERSIONS:

NORMAL : ADJUSTABLE
DELIVERY ON TURRET

FIX "F" FIXED DELIVERY

VERSATILITY IN

LUBRICATION LAYOUT
PLANNING

FLEXIBILITY TO EXPAND OR
REDUCE THE NUMBER OF
ELEMENTS TO MEET
CHANGING
REQUIREMENTS

SAVE ON LABOUR AND

PIPING COSTS : THE
METERING VALVES CAN BE
SERVICED WITHOUT
DISTURBING THE ASSEMBLY
OR EXISTING PIPEWORK

LOWER MAINTENANCE

COSTS: THE MODULAR
CONCEPT PROVIDES LOWER
COST REPLACEMENT
COMPONENTS.

REDUCED SPARE PARTS,

FEWER PARTS IN STOCK=
LOWER INVENTORY COSTS

MONOBLOCK DIVIDER VALVES FOR DUAL LINE SYSTEMS

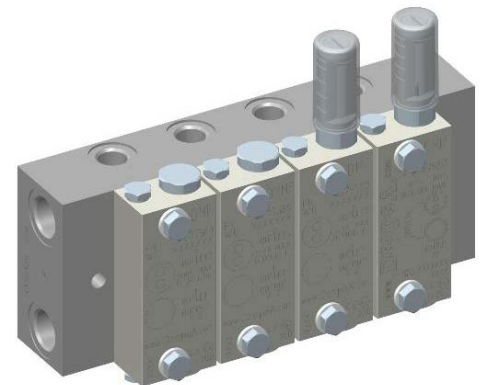
The **DM SOLID BASE** system consists in two main parts: **the monoblock Base and the Metering Valves.**

All elements and bases are made with anti-corrosion treatment, BSP or NPTF inlet and outlet tread.

The Metering Valves can be supplied with adjustable or fixed discharge.

The Valves with adjustable discharge are fitted with turrets provided with integral adjusting screws together with a metacrylate cover and seal.

A 'blanking plate' to be ordered separately, can be provided on the base to accommodate future additional points.

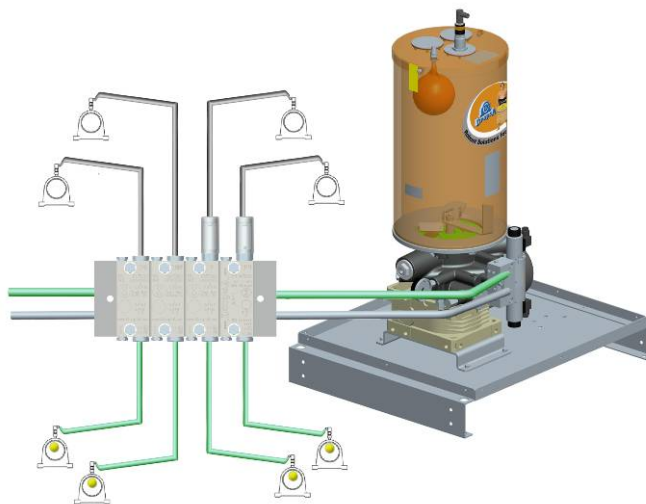


The Dual line elements now marked with a new laser marking system directly on the Nickel Plated element indicate the following information:

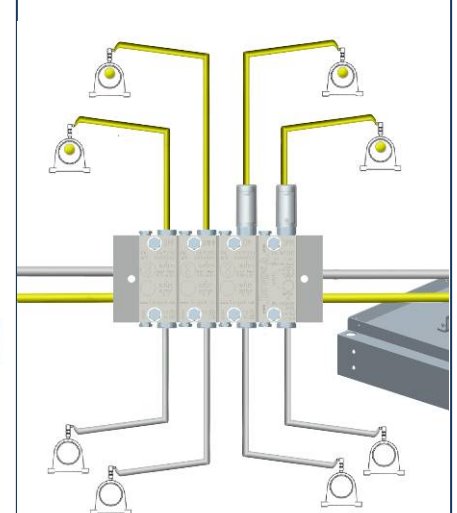
- ATEX CE Ex II2 GD Marking
- Single and Dual Outlet configuration information and Output values in cm³ and Cu.inch
- Part Number and Work Order Production (batch) identification.

ESEMPIO DI APPLICATION EXAMPLE

PRESSURE LINE 1



PRESSURE LINE 2



TECHNICAL INFORMATION

TECHNICAL CHARACTERISTICS

Temperature	22 °F ÷ 176 °F (-30°C ÷ +80°C)	
Frequency	100 cycles/minute.	
Max .Pressure (inlet)	5800 psi (400 bar)	
Lubricants	Min. Viscosity.:100 cSt Max Grease.: 265 ASTM (NLGI 2)	
Base threads	Inlet: 3/8" BSP o 3/8" NPTF. Outlet: 1/4" BSP o 1/4" NPTF.	
Flowrate	Fixed	DMMF - DMF
	Adjustable	DMM - DM

APPLICATIONS

PAPER MACHINES

STEEL PLANTS

CEMENTS WORKS

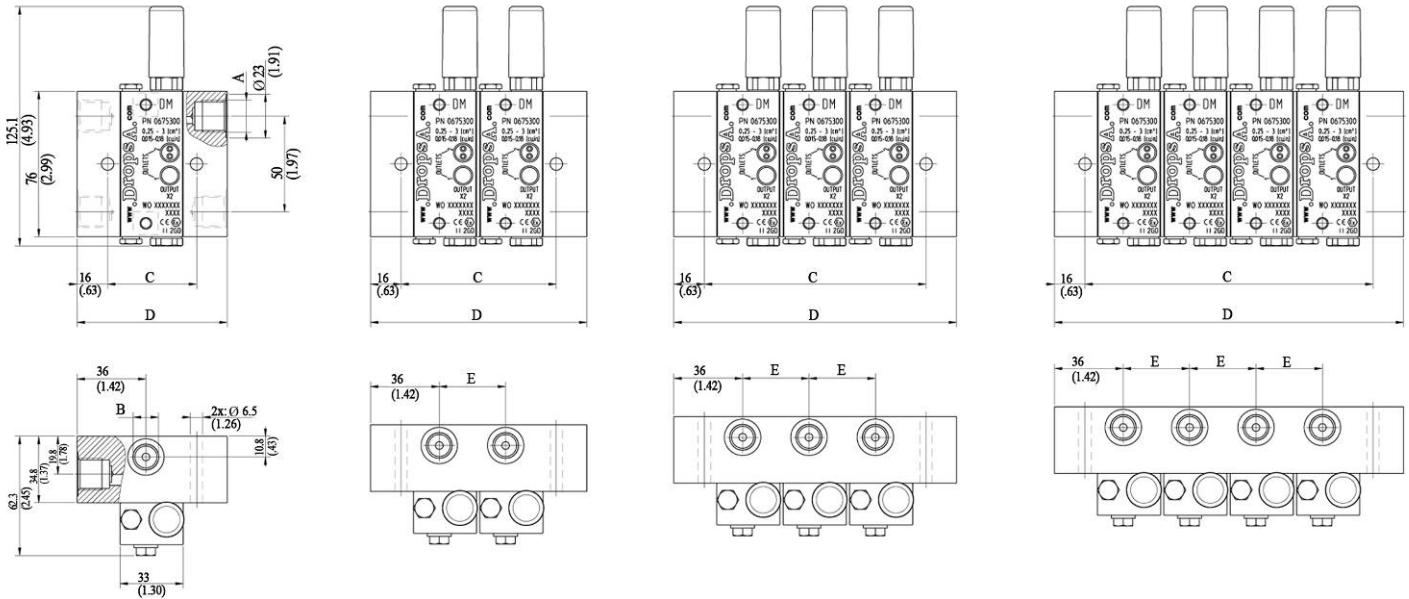
COKE PLANTS

LARGE CREANES AND
LOADING EQUIPMENT



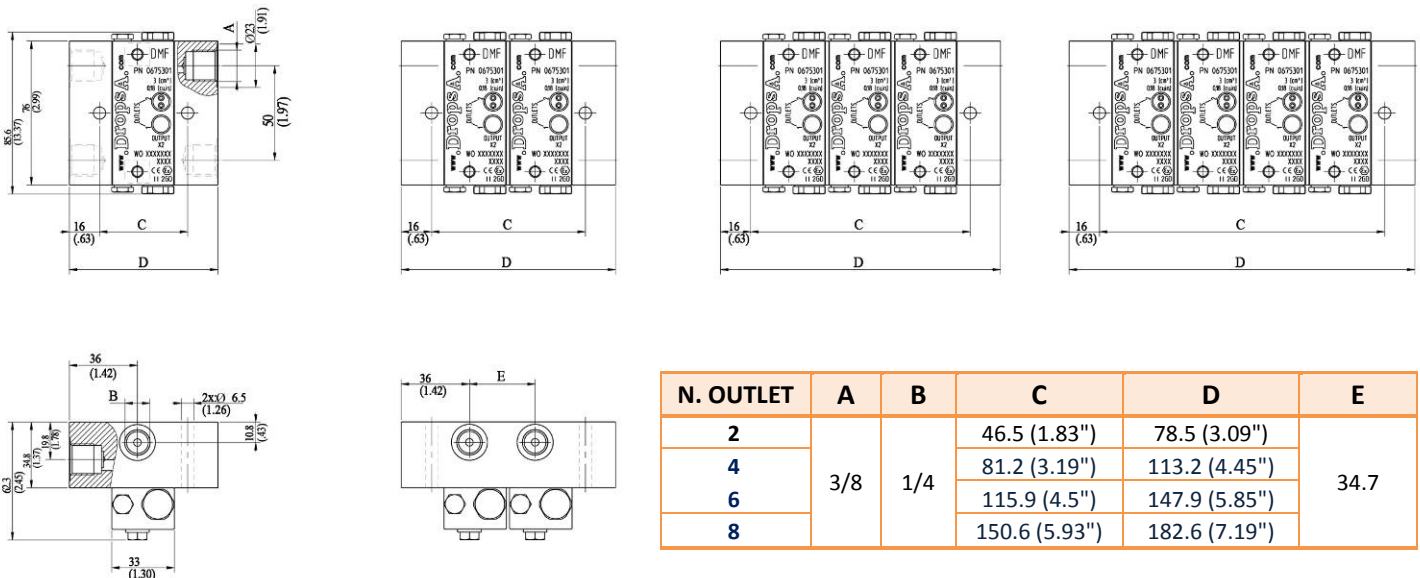
PRE – ASSEMBLED VALVE ORDERING MODULE

DM- DMM VALEVS WITH TURRET - ADJUSTABLE FLOWRATE



FLOWRATE cm ³ (cu.in)	DM			FLOWRATE cm ³ (cu.in)	DMM		
	N. OUTLET	SOLID BASE			N. OUTLET	SOLID BASE	
		BSP	NPTF			BSP	NPTF
From 0.25 to 3 (.015 - .183)	2	0675981	0675991	From 0.1 to 1 (.006-.061)	2	675631	675641
	4	0675982	0675992		4	675632	675642
	6	0675983	0675993		6	675633	675643
	8	0675984	0675994		8	675634	675644
	10	0675989	0675968				
	12	0675990	0675969				

DMF AND DMMF VALVE WITHOUT TURRET – FIXED DELIVERY



N. OUTLET	A	B	C	D	E
2	3/8	1/4	46.5 (1.83")	78.5 (3.09")	34.7
4			81.2 (3.19")	113.2 (4.45")	
6			115.9 (4.5")	147.9 (5.85")	
8			150.6 (5.93")	182.6 (7.19")	

FLOWRATE cm ³ (cu.in)	DMF			FLOWRATE cm ³ (cu.in)	DMMF		
	N. OUTLET	SOLID BASE			N. OUTLET	SOLID BASE	
		BSP	NPTF			BSP	NPTF
3 (.183)	2	0675611	0675621	1 (.061)	2	0675431	0675441
	4	0675612	0675622		4	0675432	0675442
	6	0675613	0675623		6	0675433	0675443
	8	0675614	0675624		8	0675434	0675444

CONFIGURATION INFORMATION

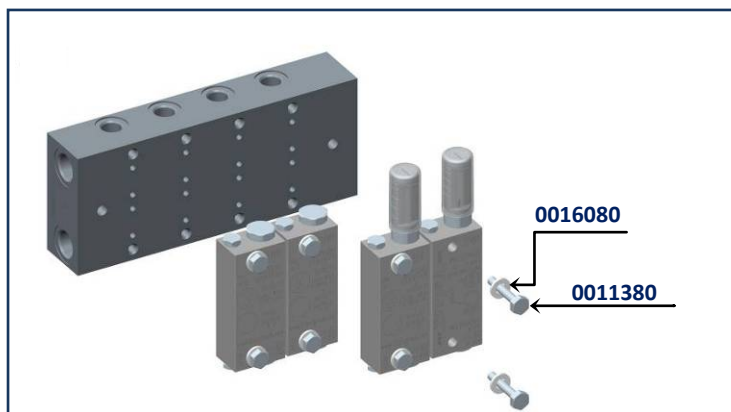
1. VALVES

FLOWRATE cm ³ (cu.in.)	VALVES	PART NO.
0,1-1 (.006-.061)	DMM	0675335
0,25-3 (.015-.183)	DM	0675300
1 (.061)	DMMF	0675385
3 (.183)	DMF	0675301

2. BASE

NPTF	BSP	OUTLET
0675571	0675551	2
0675572	0675552	4
0675573	0675553	6
0675574	0675554	8
0675575	0675555	10
0675576	0675556	12

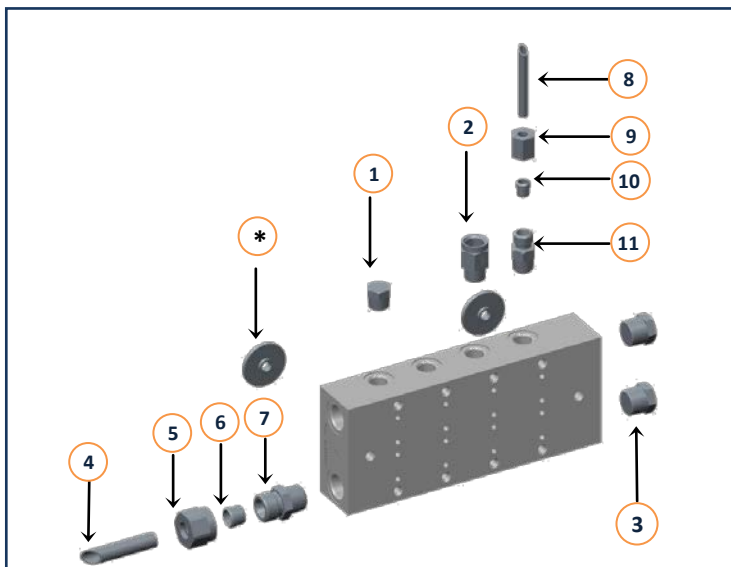
Blanking Plate as an alternative to the valve	675305
---	---------------



SCREWS *ordered separately*

DESCRIPTION	PART No.
Dual Line Elements Assembly Screw	0011380 *
Washer for Dual Line Element	0016080 *

** Sold in boxes of 500 or add the "-1" suffix for purchasing in single multiples*



TURRET COVER		
Material	Mark	Part No.
Transparent	DM e DMM	0671095
Aluminum		0618215

TURRET SPARE PART	Part No.
DM - DMM	0675638

RIDUZIONI	CODICE
M 1/4 NPTF - F 1/4 BSP Reduction	3077166
M 3/8 NPTF - F 3/8 BSP Reduction	3077165
M 1/4 BSP - F 1/4 NPTF Reduction	3077059
M 3/8 BSP - F 3/8 NPTF Reduction	3077128

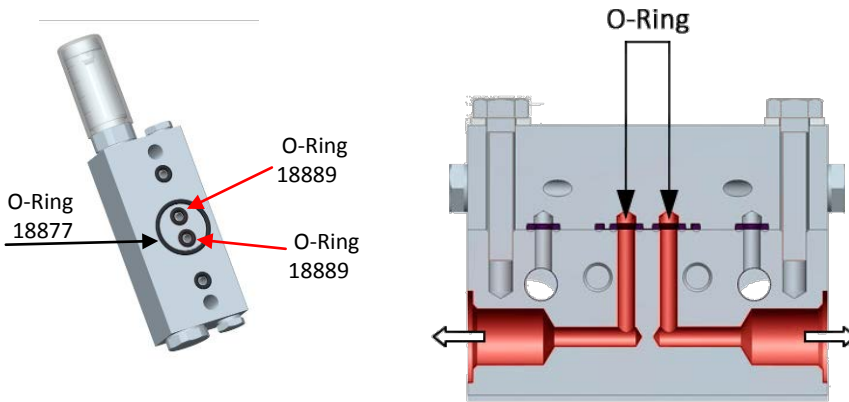
	Part No.
* washer	0233256

TUBING AND FITTINGS

ITEM	DESCRIPTION	NICKEL PLATED	ITEM	DESCRIPTION	NICKEL PLATED
1	TAPPO 1/4 BSP	0926001	7	3/8" CONN'TR STEEL Ø10	0091652
	TAPPO NPTF	0643213		3/8" CONN'TR STEEL Ø12	0091653
2	VALVOLA NON RITORNO BSP	0092313		3/8" CONN'TR STEEL Ø16	0091664
	VALVOLA NON RITORNO NPTF	0092340	8	TUBE Ø6	5119812
3	TAPPO 3/8 BSP	0926002		TUBE Ø8	5119813
	TAPPO NPTF	0850305		TUBE Ø10	5119808
4	TUBO Ø10	5119808	9	NUT Ø6	0091396
	TUBO Ø12	5119809		NUT Ø8	0091401
	TUBO Ø16	5119801		NUT Ø10	0091406
5	DADO Ø10	0091406	10	RING Ø6	0091590
	DADO Ø12	0091411		RING Ø8	0091596
	DADO Ø16	0091416		RING Ø10	0091601
6	ANELLO Ø10	0091601	11	1/4" CONNECTOR Ø6	0091952
	ANELLO Ø12	0091607		1/4" CONNECTOR Ø8	0091959
	ANELLO Ø16	0091612		1/4" CONNECTOR Ø10	0091966
7	TERMINALE 3/8" Ø10	0091967		1/4" CONN'TR VITON Ø6	0091650
	TERMINALE 3/8" Ø12	0091975		1/4" CONN'TR VITON Ø8	0091651
	TERMINALE 3/8" Ø16	0091983	1/4" CONN'TR VITON Ø10	0091660	

HOW TO CONVERT FROM ONE AT 2 OUTLETS

2 OUTLETS



The valves are arranged for 2 free outlets.

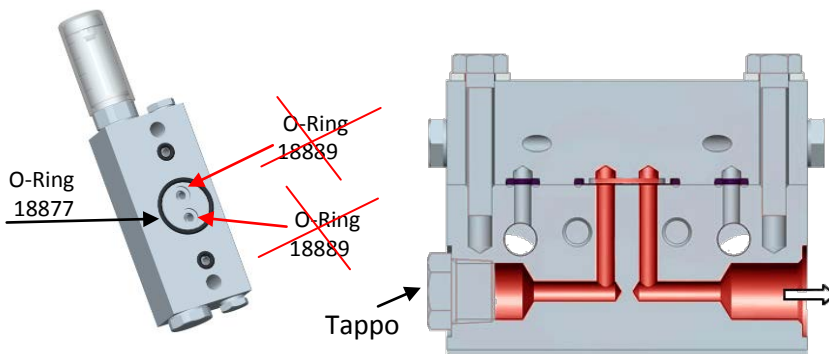
To convert to a single outlet:

- Undo the fixing screws
- Turn over the element and remove the 2 inner small O-rings (part no. 18889)
- Fit the element back in place

NOTE

For series DMG2 only: remove the adapter Part no. 675515 and gasket Part no. 675506 and replace with Part no. 675516.

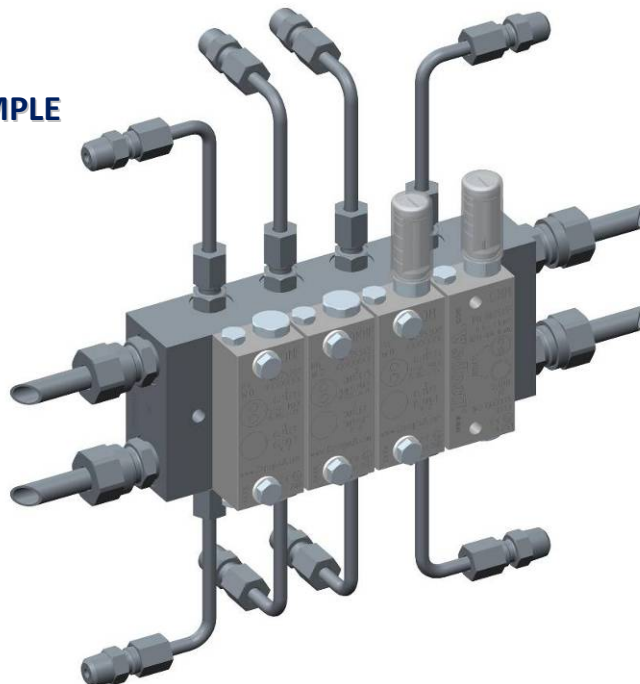
1 OUTLET



IMPORTANT: Remember to plug off the redundant outlet.

Use Plug part no. 926001 (UNI-ISO) or Part no. 850304 (NPTF).

COMPLETED MODULE EXAMPLE



Info Distributor: