

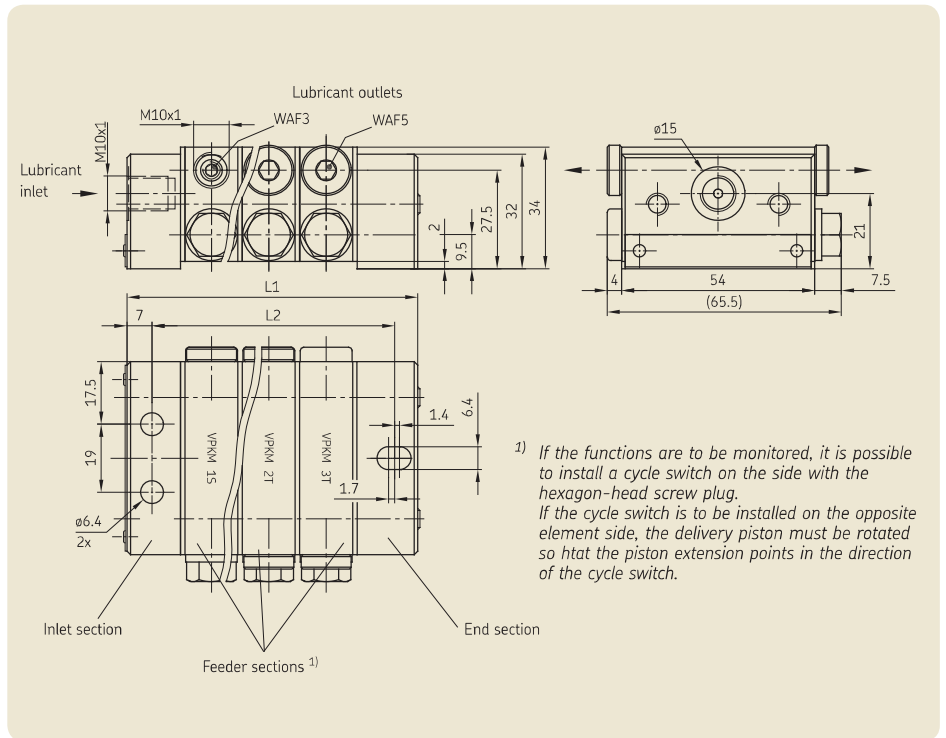
Progressive feeders, group VPKM



This group has only one outlet on each side of the section and is not equipped with built-in check valves.

Adjacent outlets on one side can be combined by screwing out the plugs installed as a standard feature (see page 25 for examples).

Operating pressure:
5 bars min. / 250 bars max.



Order No.	Number of feeder sections	Number of possible outlets	L2 ¹⁾	L1
VPKM-3 ²⁾	3	6	68.3	81.9
VPKM-4	4	8	84.6	98.1
VPKM-5	5	10	100.8	114.3
VPKM-6	6	12	117	130.5
VPKM-7	7	14	133.2	146.7
VPKM-8	8	16	149.4	162.9
VPKM-9	9	18	165.6	179.1
VPKM-10	10	20	181.8	195.3

¹⁾ The spacing between holes for attachment of the feeders can deviate from the indicated dimensions due to the individual tolerances of the feeder sections.

It is therefore advisable to drill the attachment holes on the mounting surface.

²⁾ This progressive feeder must in principle be used only with check valves.

Apportionment

Selection of feeder sections for the desired lubricant quantity.

Amount per cycle and outlet (cm ³)	Number of outlets	Designation of sections
0.04	2	05T
0.08	2	1T
0.14	2	2T
0.18	2	3T
0.08	1	05S
0.16	1	1S
0.28	1	2S
0.36	1	3S

All PS sections can be outfitted with a cycle switch.

Straight connectors

for inlet M10x1:

for 6 mm diam. tube, order No. 406-423
for 8 mm diam. tube, order No. 441-008-511
for 10 mm diam. tube, order No. 410-443

for outlet M10x1:

for 4 mm diam. tube, order No. 404-006K
for 6 mm diam. tube, order No. 406-423
for 8 mm diam. tube, order No. 441-008-511

plug-in connector

for 6 mm diam. tube,
order No. 451-006-518-VS

corresponding plug-in connectors,
see page 30

check valve

for 6 mm diam. tube, order No. VPKM-RV-VS

The order No. of the feeder must be supplemented with the section designations.

Example of an order for 1 respective 1T, 2T and 3T section starting from the inlet section: VPKM-3-1T-2T-3T

S-sections only have to be used in this group when an odd number of outlets are called for.