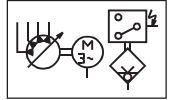




Pump unit

GMZ-E



Pump used to supply oil and grease from a barrel directly through a lid-hole or a bung-hole.

Technical data:

Delivery volume per stroke:
 Pump element "6": 0,08 cm³/stroke
 Number of strokes: ¹⁾ 22 min⁻¹
 Number of pump elements: 1 ... 15
 Delivery pressure: 350 bar
 Lubricant:
 Oil: Viscosity > 180 cP
 (200 cSt, 26 °E)
 Grease: Class NLGI 000 ... 2
 from class 1 onward follow-up plate
 required additionally.

Lubricant: The intended lubricant must be suitable for use with centralized lubrication equipment.

Pipe connection: 6, 8 and 10 mm
 Temperature range: -10 ... +40 °C
 Lower or higher temperatures by request.

Seal material: NBR (Perbunan)

Electrical data:

Motor:

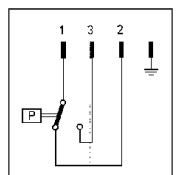
Voltage:
 at 50Hz D/Y: 220-240/380-415 V
 at 60Hz Y: 440-460 V
 Current:
 at 50Hz D/Y: 1,21/0,7 A
 at 60Hz D/Y: 1,07/0,62 A
 Rated speed: ¹⁾ 1000 min⁻¹
 Power rating: 180 W
 Protection type: IP55
 Insulation class: F
 (Other motors upon request)

Level monitor: (pressure switch)

Switching voltage AC: at max. 230 VAC
 at max. 5 A
 inductive at max. 3 A
 Switching voltage DC: at max. 125 VDC
 at max. 0,4 A
 inductive at max. 0,05 A

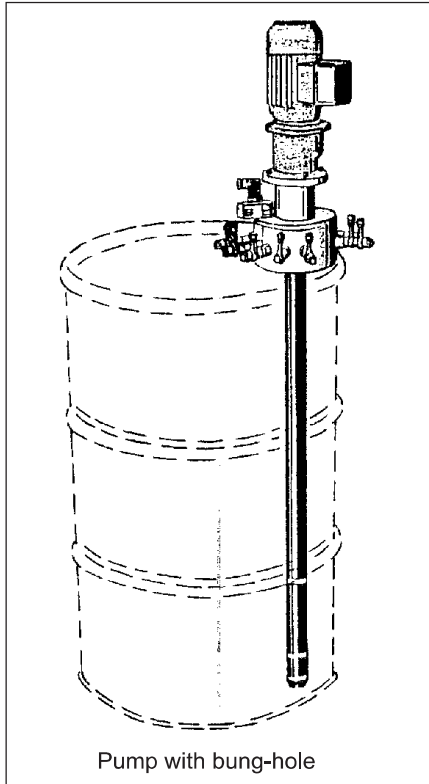
Plug connector: DIN 43650
 Protection type: IP65

Connection diagram:

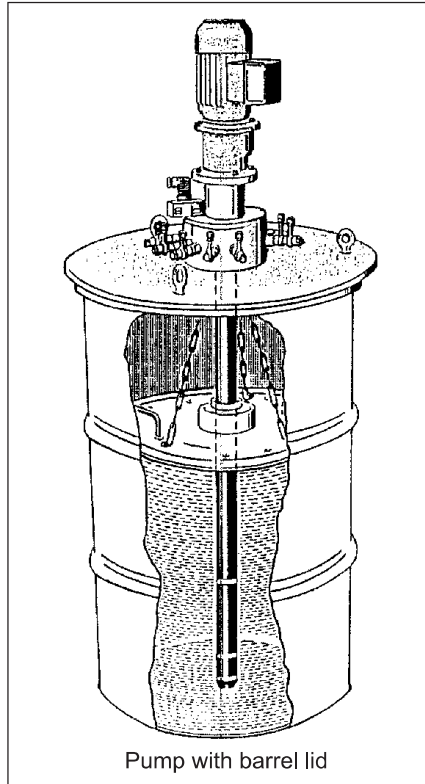


Switch position shown represents "barrel empty" (pump casing depressurized)

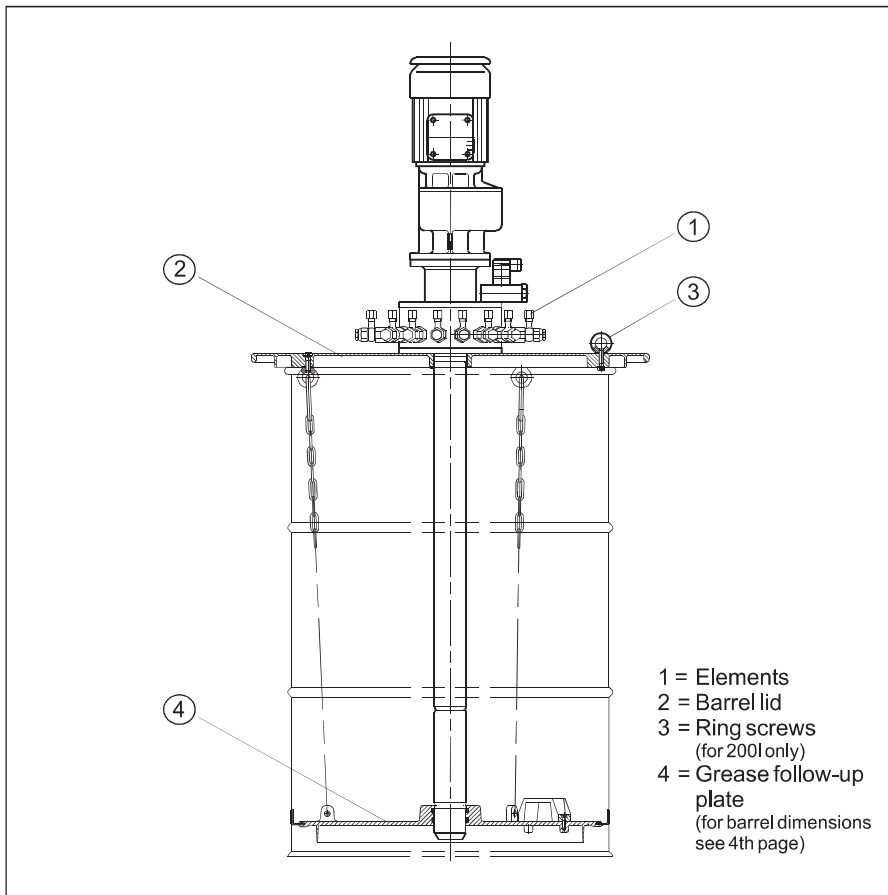
¹⁾ With standard motor and 50 Hz frequency



Pump with bung-hole



Pump with barrel lid



- 1 = Elements
- 2 = Barrel lid
- 3 = Ring screws (for 200l only)
- 4 = Grease follow-up plate (for barrel dimensions see 4th page)

- Subject to modifications -