

**Piston pump with reservoir**  
**Models KFG1-5 and KFG1-5W2-M**



The pump can be equipped with a maximum of three pump elements.

Order No.	With lubricant-level switch Order No.
KFG1-5	KFG1-5W2-M

**Pump elements**

Order No.	Delivery rate <sup>1)</sup> [ccm/min]	Connection thread
KFG1.U1	2.5	
KFG1.U2	1.8	
KFG1.U3	1.3	M14x1.5
KFG1.U4	0.8	
KFG1.U40	0.8 to 2.4 adjustable	

<sup>1)</sup> The indicated delivery rates refer to the delivery of NLGI grade 2 grease at a temperature of +20 °C and a back pressure of 50 bars. Temperatures and pressures that deviate therefrom will change the delivery rate. Take the indicated values as a basis when configuring a central lubrication system.

**Safety valves**

Order No.	Opening pressure [bars]	Connection thread	Connection for tube diam.
161-210-006	300 ± 20	M14x1.5	6
161-210-016	300 ± 20	M14x1.5	10

Please indicate in addition to the order No.:  
operating voltage,  
quantity and order No. of pump elements with safety valve.

**Order example**

**KFG1-5W2, 24 V DC**  
outfitted with pump element  
KFG1.U1 (left 1.1)  
KFG1.U2 (middle 1.2)  
KFG1.U3 (right 1.3)  
and 3 safety valves 161-210-006

**Technical data**

**Motor**

Operating voltage . . . . . 12 V DC / 24 V DC  
Fuse . . . . . 5 A / 3 A

**Unit**

Max. back pressure. . . . . 300 bars  
Perm. operating temperature . . . -25 °C to +75 °C  
Type of enclosure DIN 40050, T9 . IP 5K6K  
Reservoir capacity . . . . . 2 kg  
Reservoir material. . . . . PA6i  
Number of outlet ports . . . . . max. 3 (1.1, 1.2 and 1.3) <sup>1)</sup>  
(If less than 3 outlet ports are needed, screw plugs are used in place of pump elements.)

**Lubricant** . . . . . grease up to NLGI grade 2  
compatible with: plastics, NBR elastomers,  
copper and copper alloys.

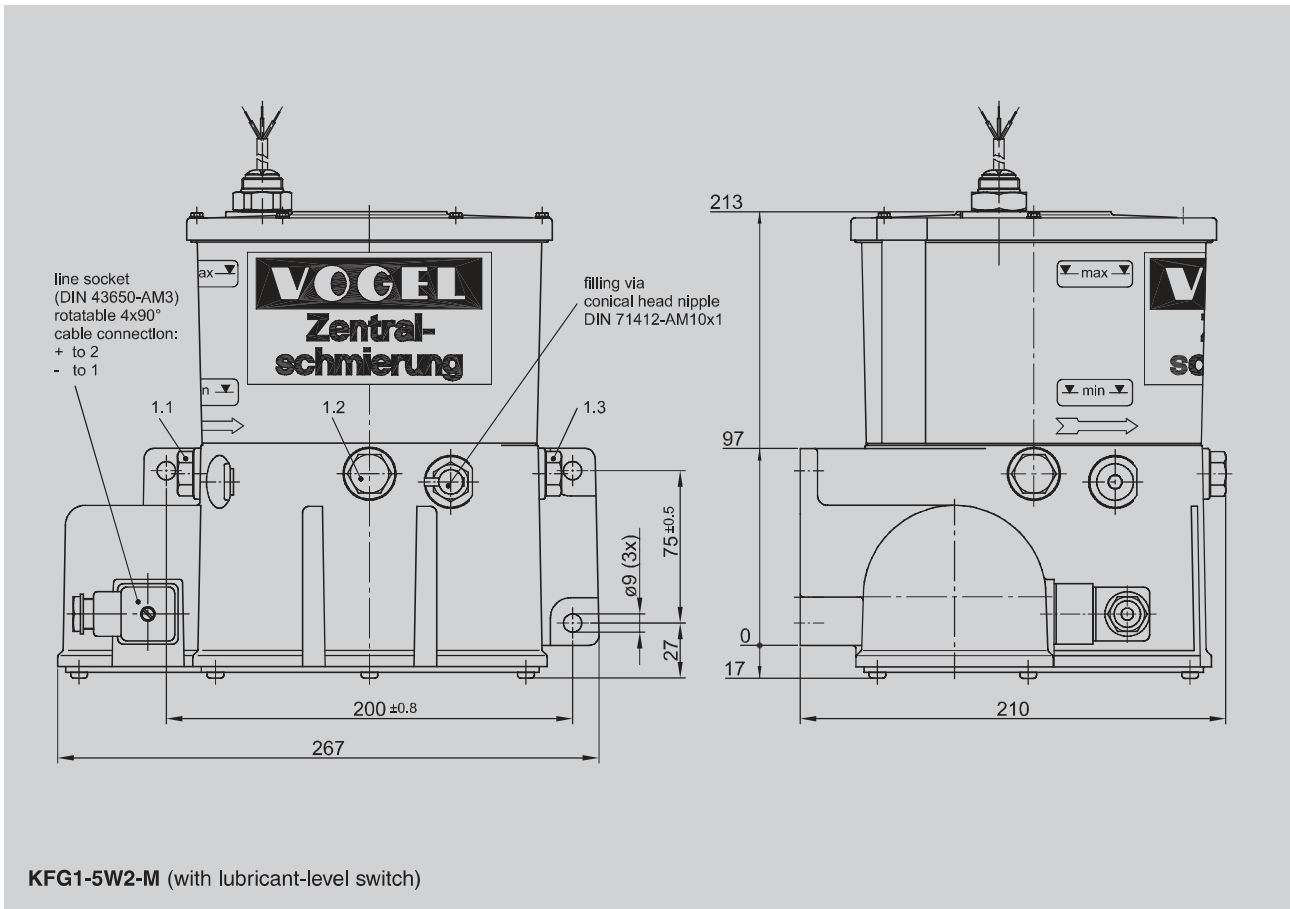
Max. flow pressure . . . . . 700 mbars

**Please note: only use grease that has been approved by Willy Vogel AG.**

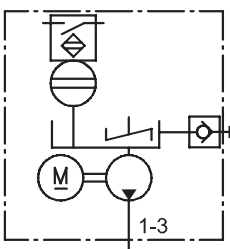
Approved lubricants list "Lubricants for progressive systems, NLGI grade 2" see "www.vogelag.com" or please request from "info@vogel-berlin.de".

**Lubricant-level switch**

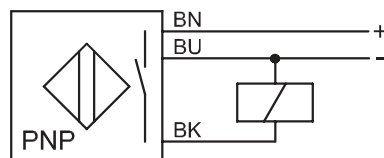
Function:  
Switch opens when lubricant drops to critical level.  
Fault also signaled in the event of a wire break.  
Operating voltage . . . . . 10 to 30 V DC  
Switching frequency . . . . . 100 Hz  
Continuous current . . . . . ≤ 200 mA  
Natural current consumption. . . . . 6 to 12 mA  
Voltage drop . . . . . ≤ 1.8 V at I<sub>continuous</sub>  
Special protective measures. . . . . load dump protection for commercial vehicles to DIN 40839-T1  
EC directives. . . . . EN 60947-5-2



**Hydraulic layout**



**Lubricant-level switch**



Color coding abbreviations

Color coding abbreviations	Core color
BN	brown
BU	blue
BK	black

**Protective measures to be taken for proper operation on machinery:**

- "Functional extra-low voltage with safety separation" to standards: EN 60204, Part 1: 1992  
DIN VDE 0100T410 A2
- Disconnect the unit for insulation and voltage tests to EN 60204-1:1992.