

CHARACTERISTICS

- SAE METRIC, BSP, NPTF THREADS AVAILABLE
- SMX: UP TO 7.200 (500 BAR)
SMO: UP TO 5.800 PSI (400 BAR)
- OPERATES WITH OIL OR GREASE
- ALL COMPONENT ARE NICKEL-PLATED, HIGH RESISTANCE TO CORROSION
- CE AND ATEX MARKING
- THE BASES ARE ALWAYS SUPPLIED COMPLETE WITH STANDARD 'O' RINGS AND FIXING SCREWS
- THE TWO OUTPUTS ARE COMBINED BY REPLACING THE ADAPTER. JUST TAKE ONE ITEM OF STOCK
- AIR BLEED VALVES BUILT INTO BASE
- SECURE AND CONTROLLED LUBRICATION
- ASSEMBLING SIMPLE AND FLEXIBLE WITH LOW MAINTENANCE COSTS
- ABILITY TO REPLACE THE DOSE WITHOUT DETACHING THE PIPES

ATEX NICKEL PLATED MODULAR PROGRESSIVE DISTRIBUTOR SMO-SMX METERING ELEMENTS FOR THE EXACT BREAKDOWN OF OILS AND GREASE

The modular system consists of two main components: the base and the metering elements.

The modular progressive distributor is available in two sizes: "SMO miniature" and "SMX standard".

Conventional bridging pieces are eliminated. Bridging elements have been introduced and these interconnect and discharge to the adjacent element.

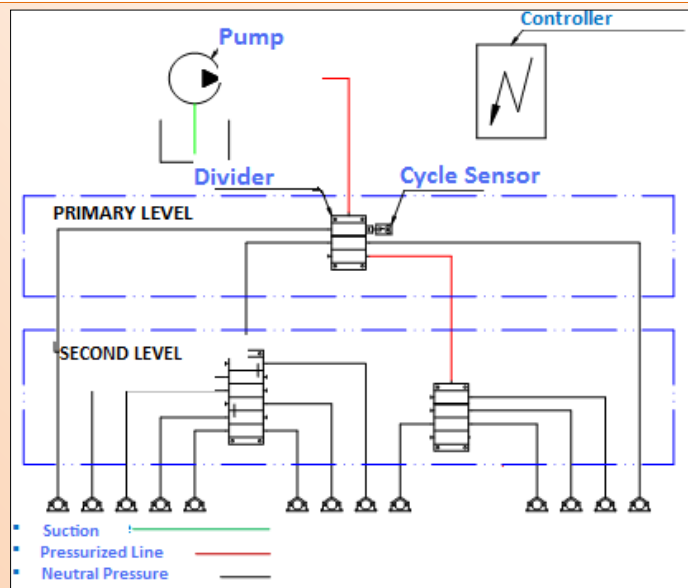
The distributor assembly principle enables factory floor distributor assembly to accommodate grouping of lubrication points.

The base assembly can be mounted and piped up without the metering elements. This provides the most advantageous routing of pipe work and the elements can then be fitted to suit.

The system can be easily extended and the modular concept provides low cost replacement of

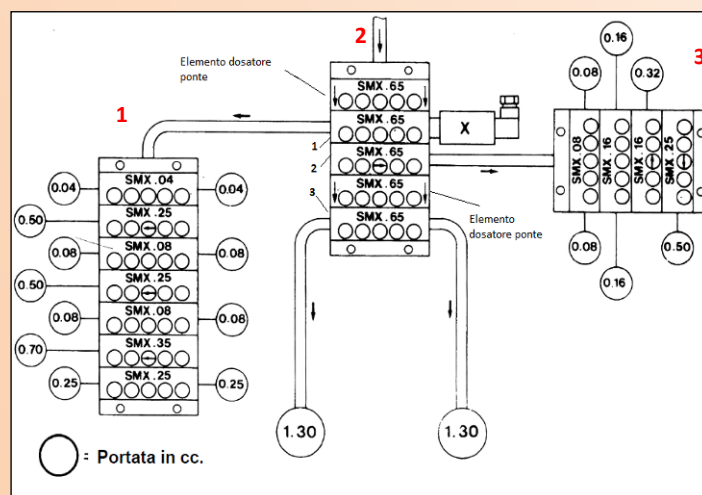


OPERATION PRINCIPLE



The base assembly can be mounted and piped up without the metering elements. This provides the most advantageous routing of pipe work and the elements can then be fitted to suit.

The system can be easily extended and the modular concept provides low cost replacement of component.



The SMX65 metering element (1) pilots a block of 7 metering elements SMX delivering 2.60cc./cycle.

The SMX65 metering element (3) pilots a block of 4 metering elements SMX delivering 1.3cc/cycle.

The SMX65 metering element (2) directly lubricates two point of the machine.

The cycle is controlled by the contact "X".

APPLICATION

- MACHINE TOOLS
- TEXTILES
- HEAVY INDUSTRY
- AUTOMOTIVE

ADVANTAGES

- Conventional tie rods are eliminated. There is no maximum limitation on the number of elements which can be used on the assembly.
- Auxiliary by-pass elements can be installed in the assembly to accommodate an increase or decrease in points without disturbing the base assembly or pipe work.
- Lubricant volume can be easily increased or decreased during system commissioning or service without disturbing the base assembly on pipe work.

THE BASE

The base is made up of a minimum of three segments:

- Inlet base
- Intermediate base
- End base

And can be increase unlimited number by addition of intermediate sections.

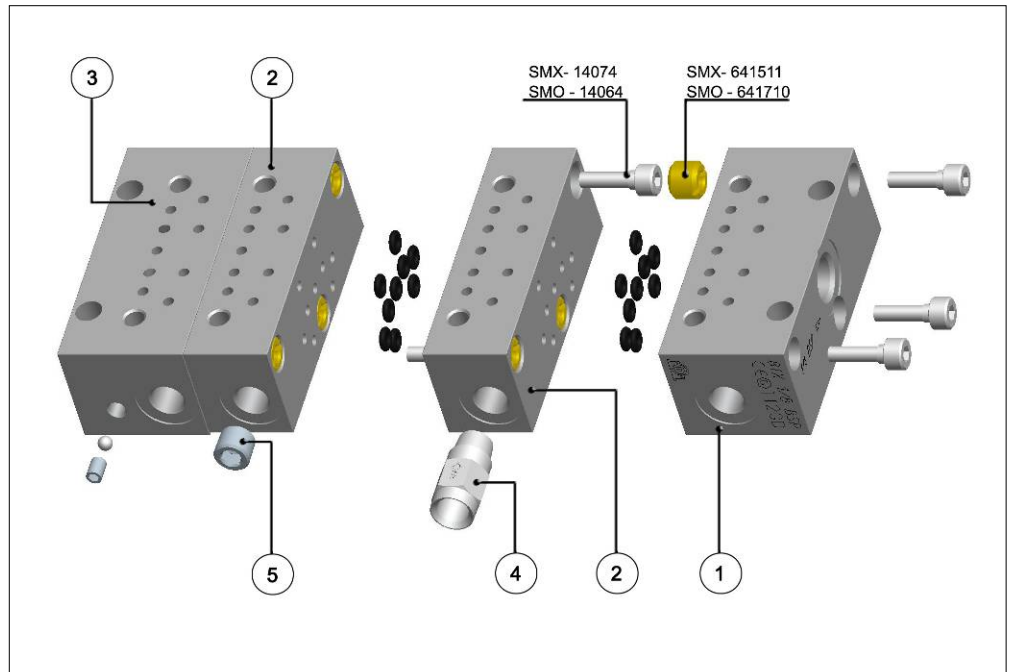
This revolutionary system makes the assembly easy and flexible; there is not need to determine in advance the size of the base, just add on distributors in unlimited number by means of very simple threaded inserts supplied for the assembly (Patented).

This simple technique allows the system to operate even at very high pressure without any leakage in the assembly.

There is also the possibility of ordering with one part number only, the end base + the intermediate base already assembled.

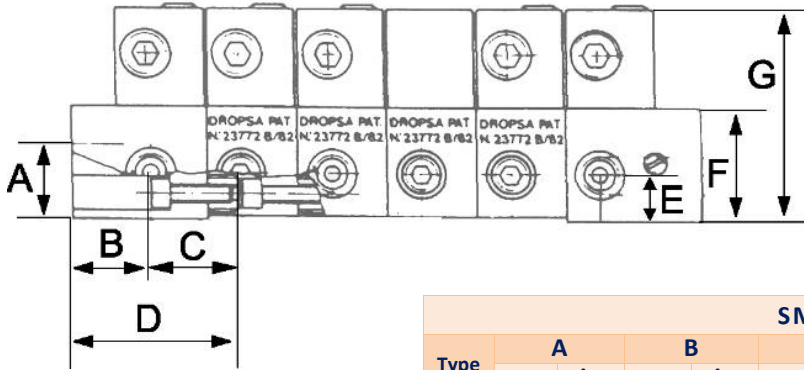
Simply add on the inlet base and you have a three base assembly.

With just 3 screws!!!!

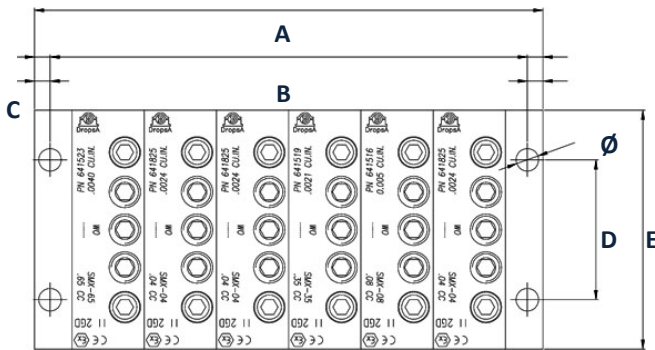


Ref.	Description	SMO		S Y M B O L	SMX			S Y M B O L
		1/8 BSP	1/8 NPTF		1/4 BSP	1/4 NPTF	7/16-20 UNF	
	Inlet Thread	1/8 BSP	1/8 NPTF		1/4 BSP	1/4 NPTF	7/16-20 UNF	
	Outlet Thread	1/8 BSP	1/8 NPTF		1/8 BSP	1/8 NPTF	7/16-20 UNF	
1	Inlet base	641711	643562	BIO	641512	643541	643800	BIX
2	Intermediate base	641712	643563	BO	641513	643542	643801	BX
3	End base	641713	643564	BFO	641515	643561	643802	BFX
4	Check valve	92335	641564		92335	641564	642029	
5	Plug	3232098	3232095		3232098	3232095	642031	

DIMENSIONS



SMO - SMX DIMENSIONS														
Type	A		B		C		D		E		F		mm	in
	mm	in	mm	in	mm	in	mm	in	mm	in	mm	in		
SMO	18.5	0.72	16	0.62	20.60	0.80	30	1.17	12.5	0.72	30	1.17	50	1.9
SMX	20	0.78	20.2	0.78	23.42	0.91	35	1.36	12.5	0.72	30	1.17	56	2.2



SMO - SMX DIMENSIONS							
Type	C		D		E		Ø
	mm	in.	mm	in.	mm	in.	
SMO	4,2	0.16	42	1.63	68	2.6	6
SMX	5,0	2	44,4 5	1.73	76	2.9	7.2

N° Elements	SMX DIMENSIONS				SMO DIMENSIONS			
	B		A		B		A	
	Hole spacing [mm] rounded	Hole spacing [inches] rounded	Overall Length [mm] rounded	Overall Length [inches] rounded	Hole spacing [mm] rounded	Hole spacing [inches] rounded	Overall Length [mm] rounded	Overall Length [inches] rounded
3	83.22	3.28	93.02	3.66	72.4	2.85	80.4	3.17
4	106.64	4.2	116.44	4.58	93.2	3.67	101.2	3.98
5	130.06	5.12	139.86	5.51	114	4.49	122	4.8
6	153.48	6.04	163.28	6.43	134.8	5.31	142.8	5.62
7	176.9	6.96	186.7	7.35	155.6	6.13	163.6	6.44
8	200.31	7.89	210.11	8.27	176.4	6.95	184.4	7.26
9	223.73	8.81	233.53	9.19	197.2	7.76	205.2	8.08
10	247.15	9.73	256.95	10.12	218	8.58	226	8.9
11	270.57	10.65	280.37	11.04	238.8	9.4	246.8	9.72
12	293.99	11.57	303.79	11.96	259.6	10.22	267.6	10.54
13	317.41	12.5	327.21	12.88	280.4	11.04	288.4	11.35
14	340.83	13.42	350.63	13.8	301.2	11.86	309.2	12.17
15	364.25	14.34	374.05	14.73	322	12.68	330	12.99
16	387.67	15.26	397.47	15.65	342.8	13.5	350.8	13.81
17	411.09	16.18	420.89	16.57	363.6	14.32	371.6	14.63
18	434.5	17.11	444.3	17.49	384.4	15.13	392.4	15.45
19	457.92	18.03	467.72	18.41	405.2	15.95	413.2	16.27
20	481.34	18.95	491.14	19.34	426	16.77	434	17.09



SMO ASSEMBLED BASE					SMX ASSEMBLED BASE				
N° Elements	Inlet-Outlet thread		Weight		Inlet-Outlet thread			Weight	
	BSP	NPTF	Kg	Lb.	BSP	NPTF	SAE-UNF	Kg	Lb.
3	641763	643543	0.92	2.0	641583	643523	642703	1.3	2.9
4	641764	643544	1.13	2.5	641584	643524	642704	1.6	3.5
5	641765	643545	1.33	2.9	641585	643525	642705	1.9	4.2
6	641766	643546	1.54	3.4	641586	643526	642706	2.2	4.8
7	641767	643547	1.75	3.9	641587	643527	642707	2.5	5.5
8	641768	643548	1.96	4.3	641588	643528	642708	2.8	6.2
9	641769	643549	2.17	4.8	641589	643529	642709	3.1	6.8
10	641770	643550	2.38	5.2	641590	643530	642710	3.4	7.5
11	641771	643551	2.59	5.7	641591	643531	642711	3.7	8.1
12	641772	643552	2.80	6.2	641592	643532	642712	4.0	8.8
13	641773	643553	3.00	6.6	641593	643533	642713	4.3	9.5
14	641774	643554	3.16	6.9	641594	643534	642714	4.5	9.9
15	641775	643555	3.42	7.5	641595	643535	642715	4.9	10.8
16	641776	643556	3.63	8.0	641596	643536	642716	5.2	11.4
17	641777	643557	3.84	8.4	641597	643537	642717	5.5	12.1
18	641778	643558	4.05	8.8	641598	643538	642718	5.8	12.8
19	641779	643559	4.26	9.4	641599	643539	642719	6.1	13.4
20	641780	643560	4.47	9.8	641600	643540	642720	6.4	14.0

METERING ELEMENTS FLOW RATE

SMO METERING ELEMENTS*			
OUTLET FOLW RATE		1OR 2 OUTLETS	
CC.	CU. IN.	Symbol	P. No.
0,04	0.0024	SMO 04	641720
0,08	0.005	SMO 08	641716
0,16	0.010	SMO 16	641717
0,25	0.015	SMO 25	641718
0,00	0.000	BY PASS 0	641714

SMO BRIDGE METERING ELEMENTS - with flow rate to the next element					
LEFT		LEFT / RIGHT		RIGHT	
Symbol	P. No.	Symbol	P. No.	Symbol	P. No.
SMO 04L	641733	SMO 04LR	641744	SMO 04R	641738
SMO 08L	641734	SMO 08LR	641745	SMO 08R	641739
SMO 16L	641735	SMO 16LR	641746	SMO 16R	641740
SMO 25L	641736	SMO 25LR	641747	SMO 25R	641741

SMX METERING ELEMENTS*			
OUTLET FOLW RATE		1OR 2 OUTLETS	
CC.	CU. IN.	Symbol	P. No.
0,04	0.0024	SMX 04	641825
0,08	0.005	SMX 08	641516
0,16	0.010	SMX 16	641517
0,25	0.015	SMX 25	641518
0,35	0.021	SMX 35	641519
0,40	0.025	SMX 40	641520
0,50	0.030	SMX 50	641521
0,60	0.036	SMX 60	641522
0,65	0.040	SMX 65	641523
0,00	0.000	BY PASS X	641514

SMX BRIDGE METERING ELEMENTS - with flow rate to the next element					
LEFT		LEFT / RIGHT		RIGHT	
Symbol	P. No.	Symbol	P. No.	Symbol	P. No.
SMX 04L	641826	SMX 04LR	641827	SMX 04R	641828
SMX 08L	641629	SMX 08LR	641637	SMX 08R	641621
SMX 16L	641630	SMX 16LR	641638	SMX 16R	641622
SMX 25L	641631	SMX 25LR	641639	SMX 25R	641623
SMX 35L	641632	SMX 35LR	641640	SMX 35R	641624
SMX 40L	641633	SMX 40LR	641641	SMX 40R	641625
SMX 50L	641634	SMX 50LR	641642	SMX 50R	641626
SMX 60L	641635	SMX 60LR	641643	SMX 60R	641627
SMX 65L	641636	SMX 65LR	641644	SMX 65R	641628

(*) Approved according to automotive specifications



	FLOW RATE		DISTRIBUTOR OR WITH INDICATING PIN C	DISTRIBUTOR WITH NO REED SWITCH CC	DISTRIBUTOR COMPLETE WITH CHANGE OVER REED SWITCH GX	DISTRIBUTOR WITH MICRO SWITCH CT	DISTRIBUTOR WITH PIN AND NO REED SWITCH GC	DISTRIBUTOR WITH PIN AND CHANGE OVER REED SWITCH GXC
	Cm3	Cu.in						
SMX	.04	.0024	641829	641833	641972	641837	-	-
	.08	.005	641830	641834	641973	641838	-	-
	.16	.010	641831	641835	641974	641839	-	-
	.25	.015	641832	641836	641975	641840	-	-
	.35	.021	641695	641569	641976	641820	641690	641493
	.40	.025	641696	641570	641977	641821	641691	641494
	.50	.030	641697	641571	641978	641822	641692	641495
	.60	.036	641698	641572	641979	641823	641693	641496
	.65	.040	641699	641573	641980	641824	641694	641497
SMO	.04	.0024	641861	641786	641896	641867	-	-
	.08	.005	641862	641787	641897	641868	-	-
	.16	.010	641863	641788	641898	641869	-	-
	.25	.015	641761	641811	641899	641815	641813	641568

ACCESSORIES

PRESSURE INDICATOR WITH ROD			MEMBRANE PRESSURE INDICATOR			PRESSURE INDICATOR WITH MEMORY		
PRESSURE		P. No.	PRESSURE		P. No.	PRESSURE		P. No.
psi	Bar	1/8 BSP	psi	Bar	1/8 BSP	psi	Bar	1/8 BSP
300	20	3290019	450	30	3290012	450	30	3290000
450	30	3290006	750	50	3290013	750	50	3290001
750	50	3290007	1100	75	3290014	1100	75	3290022
1500	100	3290008	1500	100	3290015	1500	100	3290002
2200	150	3290009	2200	150	3290016	2200	150	3290003
2900	200	3290010	2900	200	3290017	2900	200	3290004
3600	250	3290011				3600	250	3290005

DESCRIPTION	SMX	SMO
Ultrasensor stainless steel AISI 316	1655340	1655342
Ultrasensor Nickel-plated brass	1655305	1655308
M12 female connector Ultrasensor	039999	
Sealing disk	0641709	
Outelt non return valves	0092335	
M 1/4 NPTF - F 1/4 BSP Reduction	3077166	
M 1/8 NPTF - F 1/8 BSP Reduction	3077090	
M 1/4 BSP - F 1/4 NPTF Reduction	3077059	
M 1/8 BSP - F 1/8 NPTF Reduction	3077075	
Bases Assembly screws	0014074*	0014064*
Threaded Inserts	641511*	641710*
Elements Assembly Screw	0014242*	0014077*
Single Line adaptor	0641708	
Base and Element assembly kit (N°3 Bases Assembly screws - N°3 Threaded Inserts - N°2 Elements Assembly Screw - N° 1 Single Line adaptor)	3140770	3140769

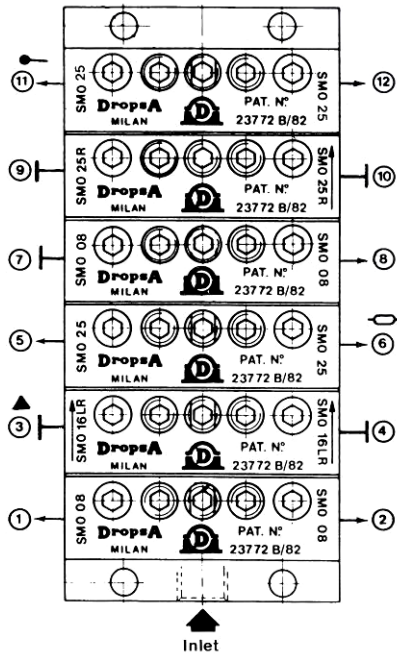
* Ordered separately
(Sold in boxes of 500 or add the "-1" suffix for purchasing in single multiples)

ORDERING INFORMATION

ORDER EXAMPLE

SMO - 6 (08 - 16LR - 25CC - 08D - 25R - 25C)

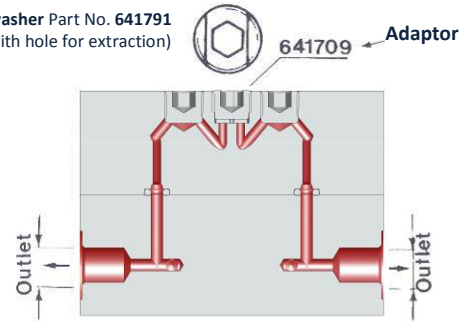
Note: the assembly is seen vertically and the outlets are in sequence; starting from the bottom (inlet) from left to right. Symbol ?LR? Refers to bridge elements.



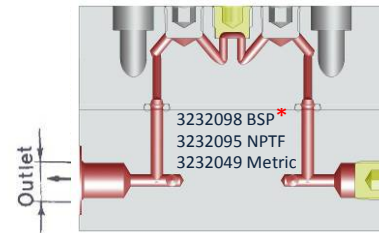
SINGLE AND DOUBLE OUTLET CONVERSION

It is possible to double the delivery of a single element by replacing the Adapter Part No. 641709 with the Adapter Part No. 641708 as shown in the drawing below. When converted into single, plug off the second outlet.

Sealing disc-washer Part No. 641791 (With hole for extraction)

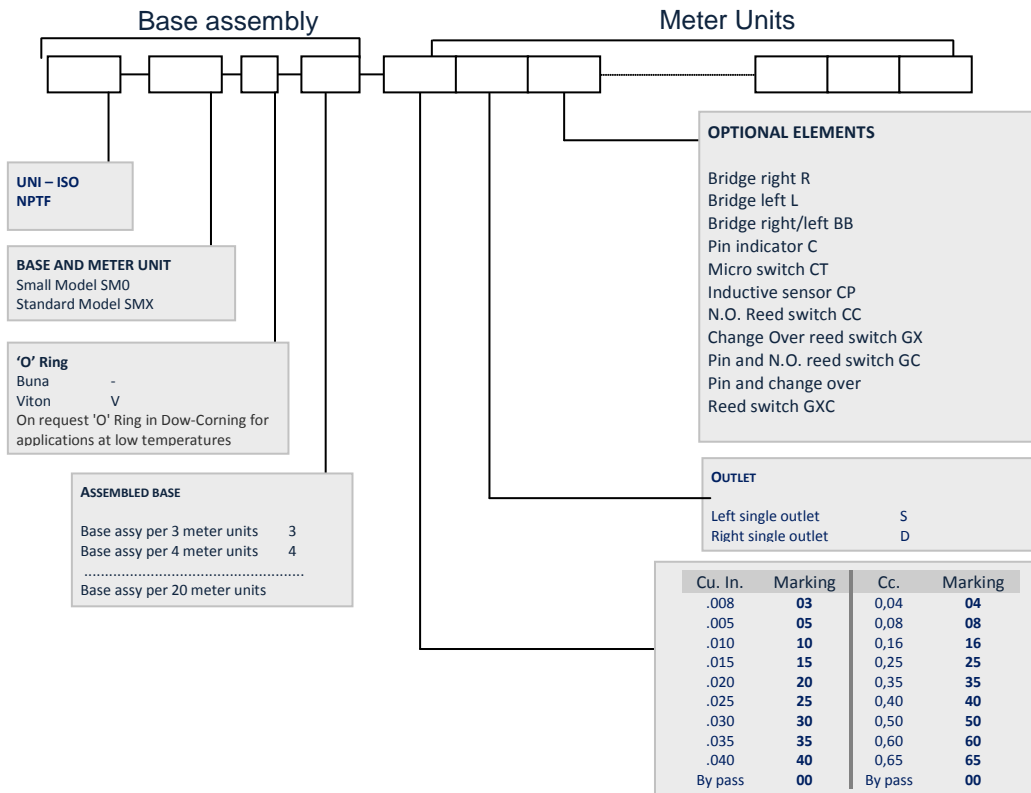


Adapter Part No. 641708



* Ordered separately (Sold in box of 500)

HOW TO ORDER



sales@dropsa.com
www.dropsa.com

ITALIA
Dropsa SpA
t. +39 02-250791
U.S.A.
Dropsa USA Incorporated
t. +1 586-566-1540

U.K.
Dropsa (UK) Ltd
t. +44 (0)1784 431177
AUSTRALIA
Dropsa Australia Ltd.
t. +61 (02)-9938-6644

GERMANY
Dropsa Schmiertechnik GmbH
t. +49 (0)211 39 40 11
BRAZIL
Dropsa do Brazil
t. +55 (0)11-563-10007

CHINA
Dropsa Lubrication Systems (Shanghai) Co., Ltd
t. +86 (021) 67740275