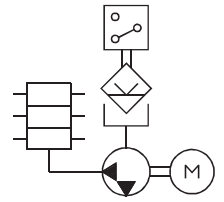




## Pump aggregate GMG-B



### Use:

As pump aggregate in central lubrication systems

- for the delivery of oil, liquid grease or grease
- 1 or 2 pump outlets
- up to 20 outlets with progressive distributor flanged-on
- electric control and monitoring
- with function stirring without delivery

### Technical data:

- Admissible delivery pressure: at max. 250 bar
- Number of pump elements: at max. 2
- Delivery volume per stroke and element
- with pump element 08: 0,08 cm<sup>3</sup>
  - with pump element 16: 0,16 cm<sup>3</sup>
- Temperature range: -20 ... +60 °C  
At low temperatures, grease penetration needs to be observed.
- Mounting position: vertically
- Material
- Casing: Aluminium
  - Pump element: Steel
  - Reservoir: Steel / Polyamide transparent
  - Gaskets: NBR (Perbunan)
- Medium: Oil and grease up to NLGI class 2  
(Mind conditions of use of both the reservoir and filling level monitoring device!)
- Drive:
- Mains voltage: 24 VDC
  - Current at max.: 2,5A
  - Speed (load-dependent): approx. 30 min<sup>-1</sup>
  - System of protection: IP 55
- (Depending on type of construction, the DC gear motor should only be used in pulse mode. For other modes of operation, three-phase current motors are of advantage (e.g. Pump aggregate GMA-C).)